

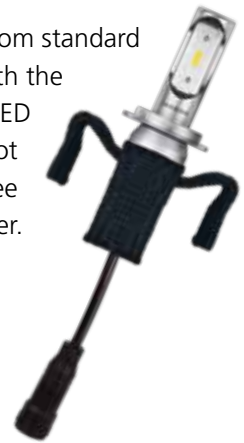


NARVA Range Power LED

LED

Range Power LED

Transform your car from standard to stylish in one easy move with the gorgeous new NARVA Range Power LED bulbs. With crisp, white light and brilliant colors, not only will you look good, the brighter lights will help you see more and react faster.



■ Headlamps

Illuminate the road with bright white headlights, ensuring great visibility and an amazing appearance. Due to their compact size and "twist and fit" design, these bulbs are one of the easiest to install. With superior thermal resistance, the lights are protected from heat damage, making them extra durable and long-lasting. Advanced optical design ensures safe driving without glaring oncoming road users.



ECE	Ref. No	V	W	Base	Pieces/PU	Packaging
LED-HL [≈H4]	180043000	12	15.8	P43t-38	6	X2



ECE	Ref. No	V	W	Base	Pieces/PU	Packaging
LED-HL [≈H7]	180053000	12	15.8	PX26d	6	X2



It is your own responsibility that the use of the LED retrofit lights complies with applicable legal requirements. Lumileds cannot accept any responsibility and/or liability.



The LED retrofit headlights and exterior signaling lighting cannot be sold in Germany, Spain, Cyprus, Netherlands, Greece, Luxemburg and Malta.

■ Frequently asked questions

▼ What is LED retrofit?

LED retrofit allows you to easily upgrade your vehicle's lighting from conventional halogen bulbs to more modern LED lights.

▼ Why should I buy this product?

Firstly, these LEDs are easy to install. They also have a compact design, one of the smallest available on the market, so fit into a large range of vehicle models. And they're designed to last longer than comparable products currently on the market. In order to control the heat generated when in use, NARVA LED headlights have a built in "heatsink" which dissipate heat away from the light's critical components. Good heat management improves the LED's lifetime.



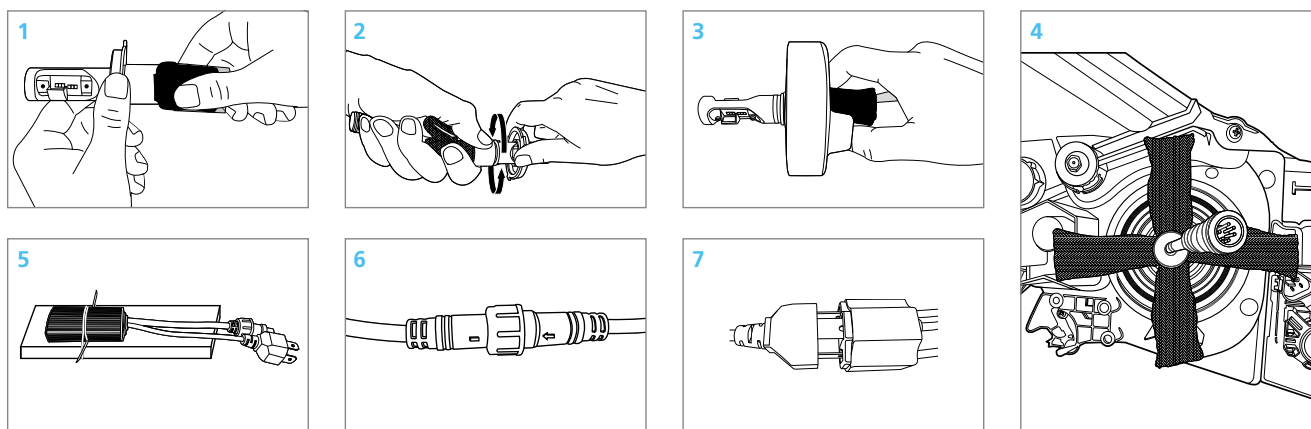
▼ How do I replace the incandescent bulb with a LED bulb? Is it difficult?

The good news? You don't need to be a mechanical engineer to upgrade your vehicle's lights. The NARVA Range Power LEDs have been designed to replace halogen and conventional bulbs. They're very easy to install with a simple twist and fit design. Simply follow the guidance on or in the package. We also recommend checking there is enough space to house the bulbs prior to purchase.

▼ What is the purpose of the control box?

The control box provides a very important function. It converts the car voltage (12V) into the voltage required by the LED to ensure it works correctly.


■ Headlamps installation




■ Signaling and interior lamps

NARVA Range Power LED offers crisp and vibrant positioning and interior lights. Besides looking great, now whenever you maneuver on the road, other drivers will quickly and clearly see what you are doing - making you and them safer. To get high quality products ensuring a continuing performance, and upgrade your style, choose NARVA Range Power LED!

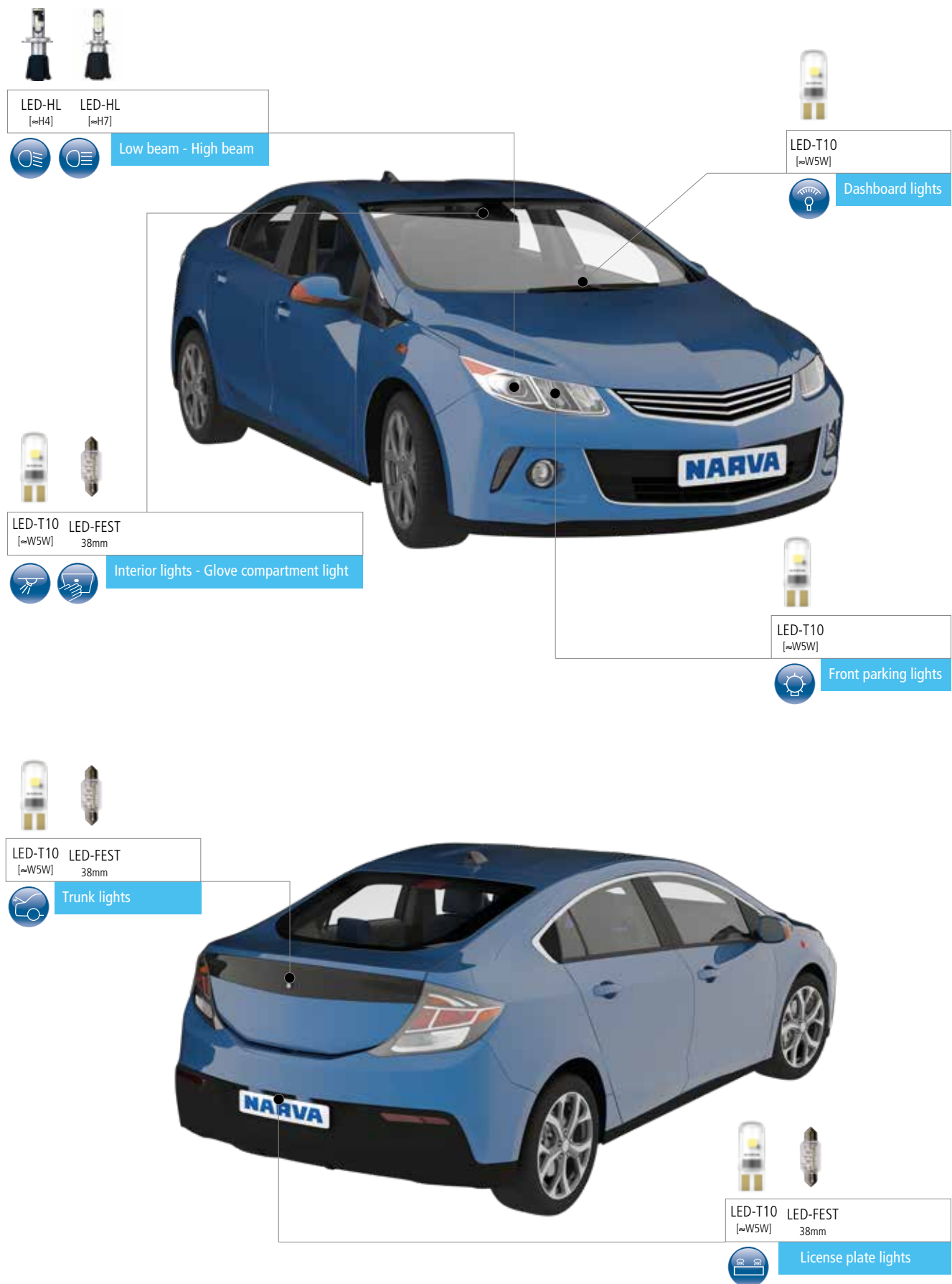
Transform your car, choose NARVA Range Power LED!

	ECE	Ref. No	V	W	Base	Pieces/PU	Packaging
	LED-T10 [≈W5W]*	18003 4000	12	0.35	W2,1x9,5d	10	B2

	ECE	Ref. No	V	W	Base	Pieces/PU	Packaging
	LED-FEST 38mm*	18010 4000	12	0.35	SV8,5	10	B2

*Check availability with your local NARVA representative.

■ Which type of LED retrofit do you need?





Lumileds Germany GmbH

Philipsstraße 8
52068 Aachen
Germany

Tel. +49 241 539 3030
E-mail: info@narva-light.com
www.narva-light.com

Images for illustration purposes only. EN-2018